



Flooding Continues - Thunderstorms Return

April 3, 2026
2:41 PM

For Northern Ohio and Northwest Pennsylvania

Decision Support Briefing #2

→ As of 2:30 PM Friday, April 3rd, 2026

NEW

Key Messages

- River flooding continues on several rivers
 - ◆ **Major** flooding continues on the Portage River near Pemberville, Woodville, and Elmore.
- Additional rainfall of around 0.50" to 1.50" is expected this afternoon through Saturday night. Additional flooding is possible.
- **Marginal Risk (Level 1 of 5) of severe thunderstorms** late this afternoon and evening.
- **Slight Risk (Level 2 of 5) of severe storms** late Saturday afternoon and evening.

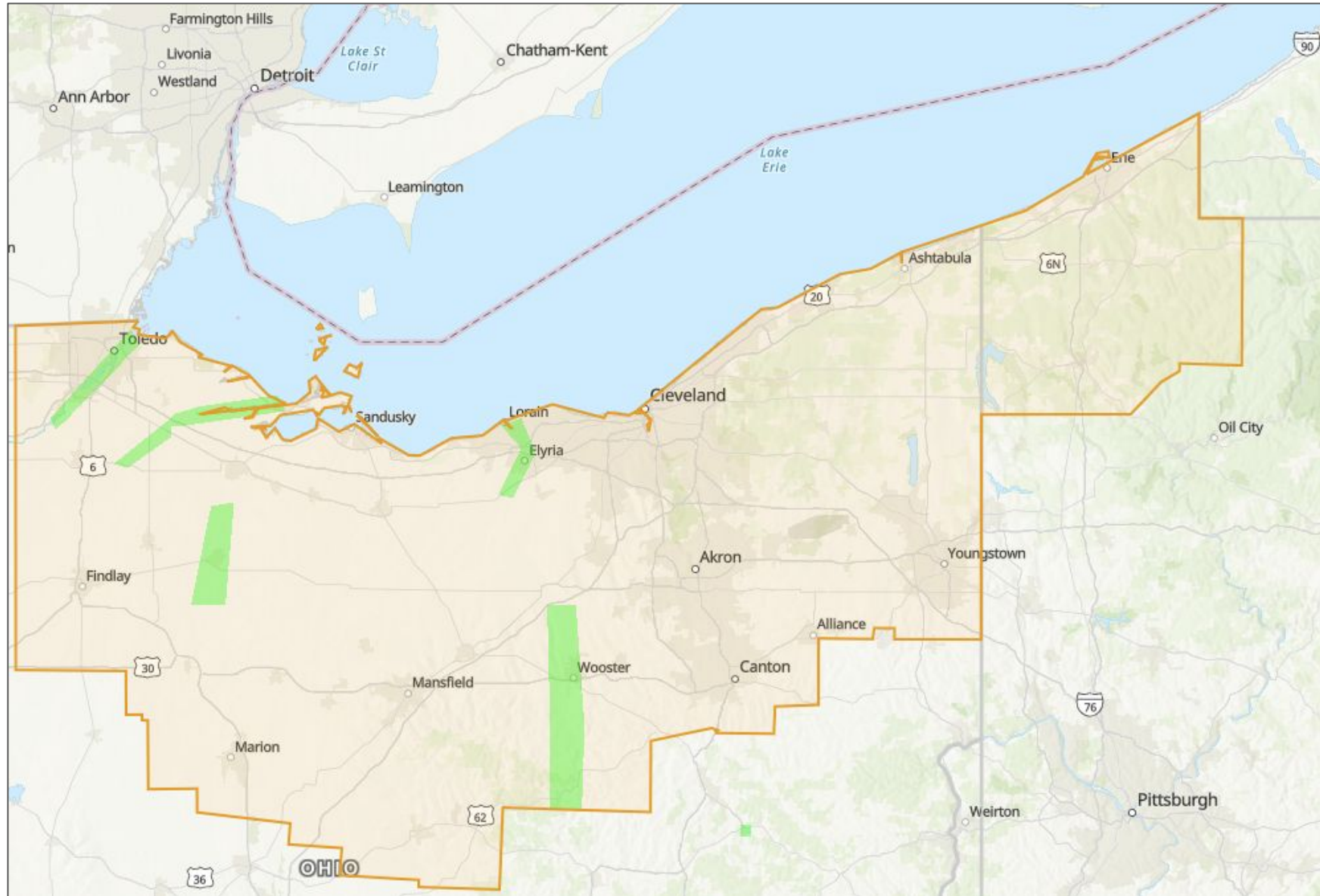




River Flooding Continues

April 3, 2026
2:41 PM

The green polygons on the map are river flood warnings



River Flooding

River flooding continues for several rivers in northern Ohio.

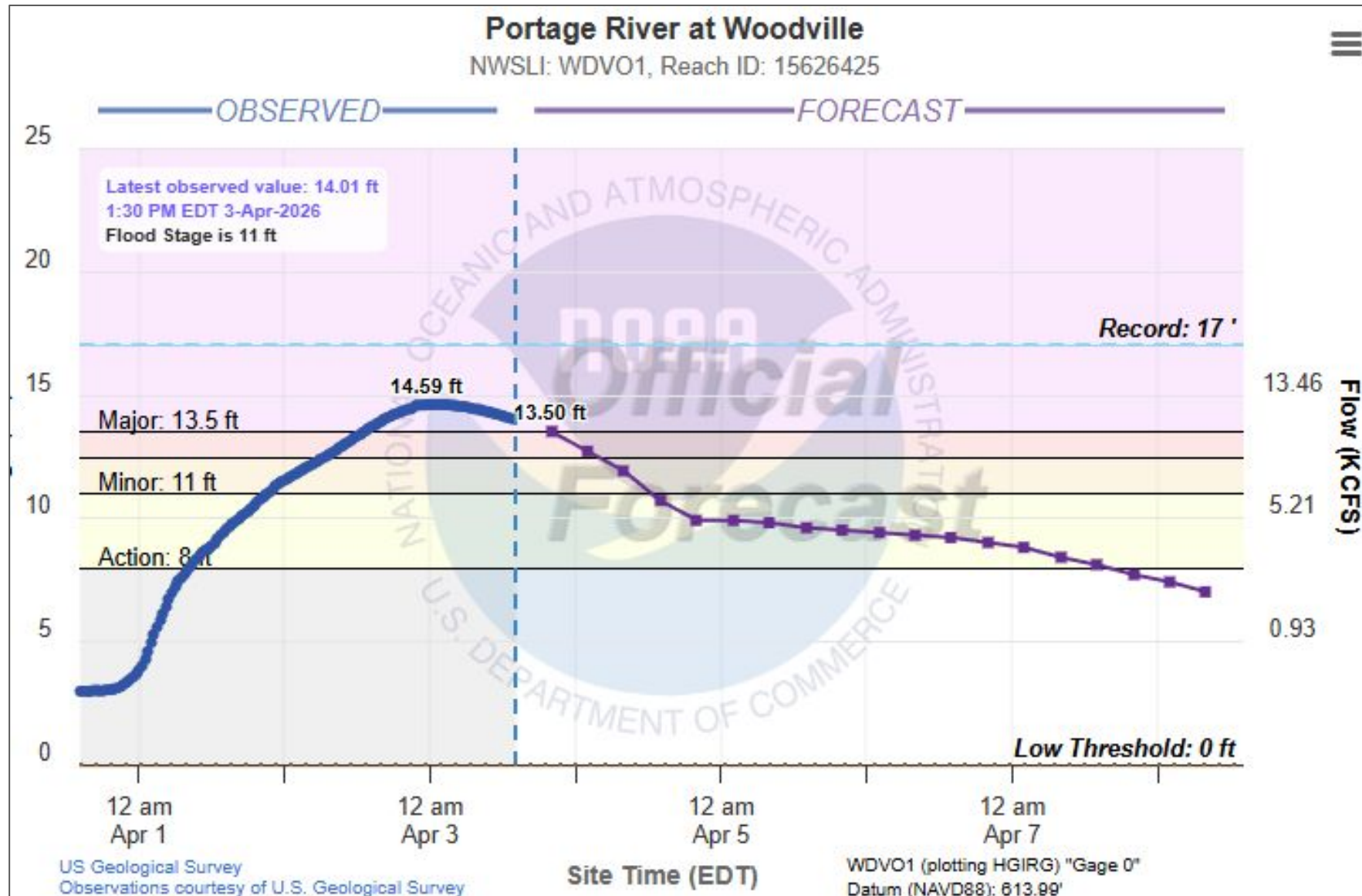
- The Portage and Maumee Rivers will recede slowly.
- Most other rivers should recede considerably today.
- However, additional rainfall through Saturday night should slow the recession of river levels and may result in renewed river rises.





Flooding on the Portage River

April 3, 2026
2:41 PM



River Flooding

Flooding continues along the Portage River from Pemberville to Woodville and downstream toward Elmore.

- The river crested overnight at 14.59' and is forecast to remain in major flood through approximately 8 PM this evening.
- The river will continue to recede slowly through Saturday.
- At 14.5' Homes in Pemberville along Bierley Street are inundated with a few feet of water.
- At 14.0' State Route 23 is inundated.
- Impacted roads include North and South River Roads, Cherry St, and Erie Street.



Rainfall Forecast

April 3, 2026
2:41 PM

Valid Friday Afternoon through Saturday Night



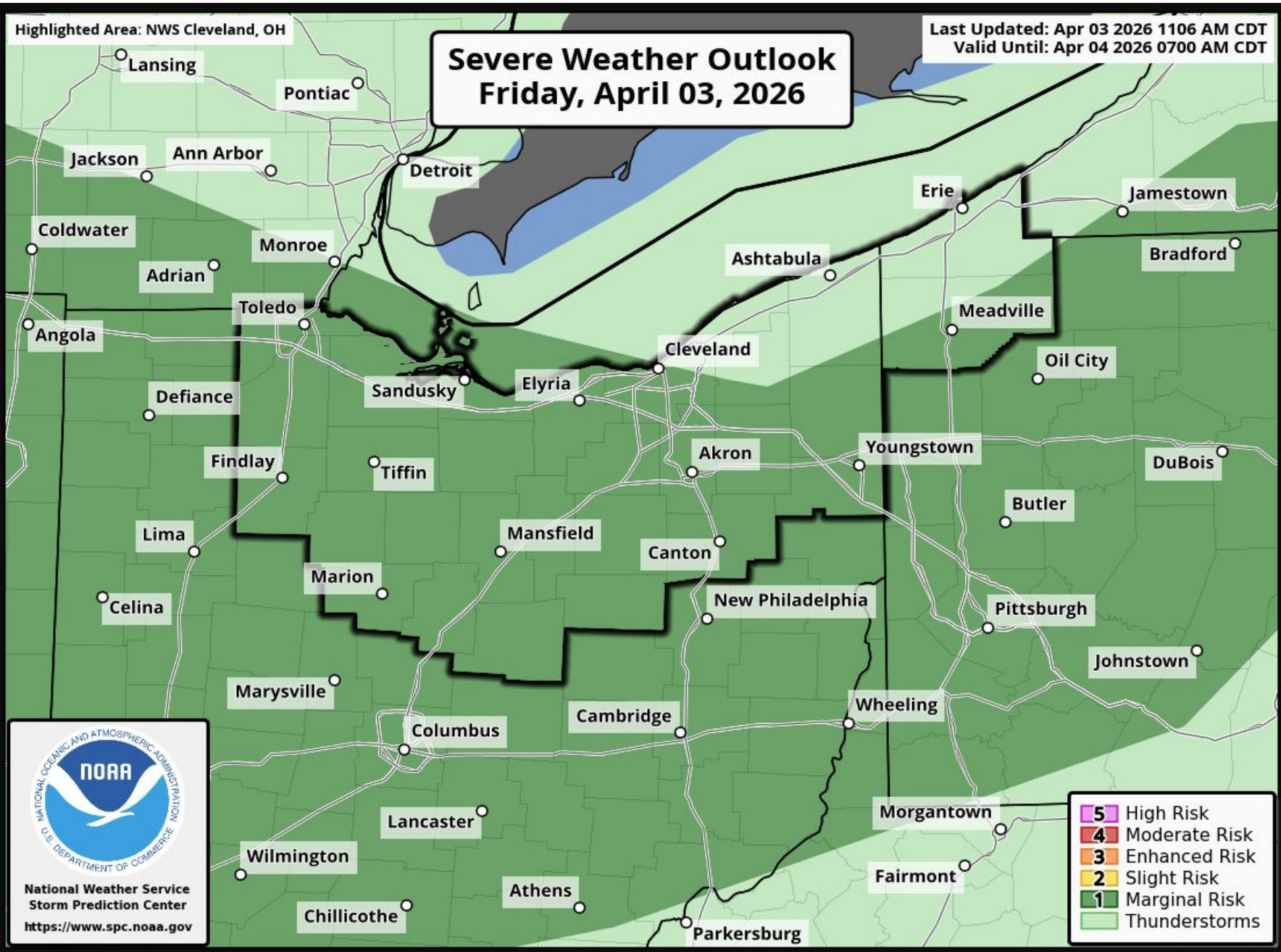
Forecast Concerns:

- This rainfall may cause additional flooding, including along rivers.



Severe Weather Outlook Today

April 3, 2026
2:41 PM



Timing:



3 PM to 10 PM

- Isolated severe thunderstorms are possible late this afternoon into the evening.

Actions:

- Be weather aware and ready to act.
- Have multiple ways to receive warning information!

Severe Weather Threats:



Damaging Wind

Wind gusts up to 60 mph



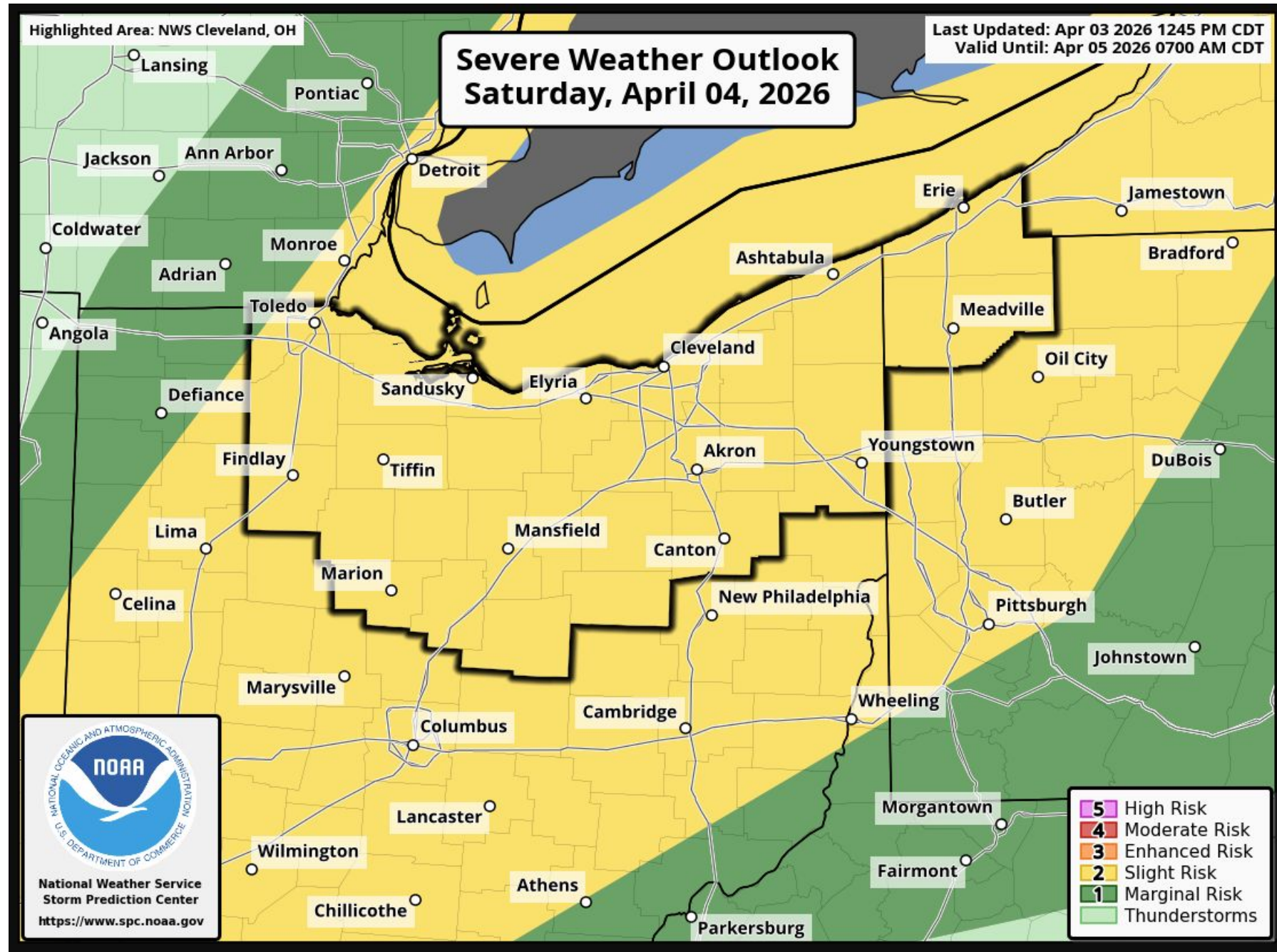
Damaging Hail

Hail up to quarter-size



Severe Weather Outlook Saturday

April 3, 2026
2:41 PM



Timing:



3 PM to 10 PM

- Scattered severe thunderstorms are possible.

Actions:

- Be weather aware and ready to act.
- Have multiple ways to receive warning information!

Severe Weather Threats:



Damaging Wind

Wind gusts up to 60 mph



Tornado

A tornado or two is possible



Contact and Next Briefing Information

April 3, 2026
2:41 PM

For National Weather Service Cleveland



Briefing Webpage

→ https://www.weather.gov/cle/quick_brief



Next Briefing

- As Needed
- Method: Email



Disclaimer

- Information contained in this briefing is time-sensitive
- Do Not Use After: 6:00 AM, Saturday, April 4th



Contact Information

Web

→ weather.gov/cle

Phone

- (216) 416-2900
- Business Hours Only

Email

→ stormcle@noaa.gov

Facebook

→ www.facebook.com/NWSCleveland

X

→ [@NWSCLE](https://twitter.com/NWSCLE)



NEVER DRIVE AROUND BARRICADES



Most flood fatalities occur in vehicles



You don't know how deep the water is



Even when the water recedes, the ground may be unstable

[weather.gov](https://www.weather.gov)





Thunderstorm Risk Categories

April 3, 2026
2:41 PM

Severe Thunderstorm Risk Categories

Thunderstorms (no label)

No severe storms expected

Lightning/flooding threats exist with all storms



Enhanced (ENH)

Numerous severe storms possible

More persistent and/or widespread, a few intense

Marginal (MRGL)

Isolated severe storms possible

Limited in duration and/or coverage and/or intensity



Moderate (MDT)

Widespread severe storms likely

Long-lived, widespread and intense

Slight (SLGT)

Scattered severe storms possible

Short-lived and/or not widespread, isolated intense storms



High (HIGH)

Widespread severe storms expected

Long-lived, very widespread and particularly intense



NWS defines a severe thunderstorm as measured wind gusts of at least 58 mph, and/or hail of at least one inch in diameter, and/or a tornado. All thunderstorm categories imply lightning and the potential for flooding. Categories are also tied to the probability of a severe weather event within 25 miles of your location.



National Oceanic and Atmospheric Administration

U.S. Department of Commerce

National Weather Service
Cleveland, OH